

## TUB2 Automatic greige fabric preparation machine of tubular fabrics

Reference: RF001469

TEXMA

model TUB2

This system are prepared to optain with the greatest functionality the automatic joining end to end of the tubulars greige fabric rolls.

The machine can be with 1 sewing station model TUB1 and with 2 sewing station TUB2.

An electronic diameter control device allows memorization of the position of the rotation group.

The unwinding cradle and folding unit controlled by drivers guarantee the low tension on the fabric.

The automatic sewing cycle save time in your preparation and reduce the waste cutted fabric normally done by hand by the operator with normal sewing machine.

Vacuum device collect this waste cutted fabrics.

Weighing device to control the weight of the rolls and the kg of day/shift production.

Possibility to have a blanket to transport the rolls inside the unwinding cradle.

Automatic sewing linear on the total tubular diameter with perfect alignment of the needle drop.

### PRODUCTION

TUB1: 120/135 seams in 7 hours (2/3 ton.)

TUB2: 250/280 seams in 7 hours (5/6 ton.)

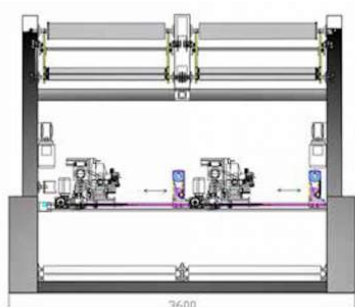
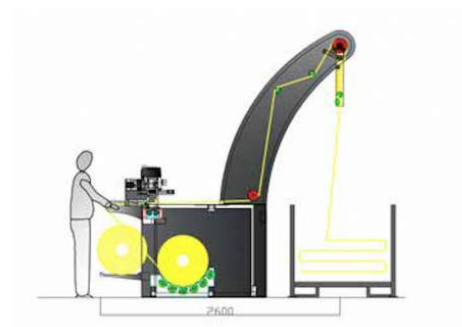
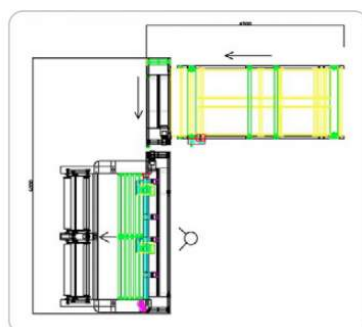
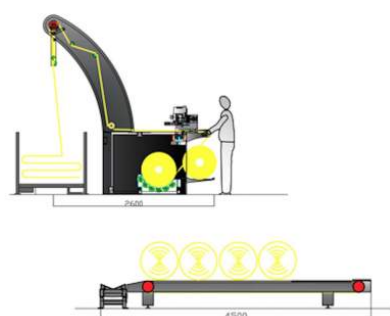
Tubular diameter: min.450mm. - max.1500 mm

Unwinding speed up to 120 meters/minute

Configuration with Automatic Roll's Transport.







CUCITURA RETTILINEA SU TUTTA LA CIRCONFERENZA DEL TUBOLARE CON PERFETTO  
ALLINEAMENTO DELLO SCARTO D'AGO.  
*Automatic sewing linear on the total tubular diameter with perfect alignment of the needle drop.*



